

# The Big Brainsy Border Collie Study: Part 1: The Survey



## Why are we doing this study?

- 🐾 Border Collies are a popular breed across the world, famed for their **working abilities**, with many others finding success as **companion dogs** or in competitive **dog sports**.
- 🐾 Studies indicate that Border Collies are predisposed to **epilepsy**, a brain disorder characterised by recurrent seizures, while others show **abnormal behaviours** including fly-catching, tail and shadow chasing.
- 🐾 We are interested in Border Collie brain development and how seizures and behavioural abnormalities arise in this breed. We are conducting a **series of studies** focusing on brain health and behaviour in the Border Collie.

## Who can get involved?

- 🐾 **ALL** Border Collie owners, with dogs of any age, sex, or neuter status
- 🐾 Border Collies both **WITH** and **WITHOUT** an epilepsy diagnosis
- 🐾 Owners from any part of the world

## What does this study involve?

Completing this survey, estimated to take **25-30 mins** which will explore your dog's day-to-day behaviour and health

[www.surveymonkey.co.uk/r/bigbrainsybordercollie](http://www.surveymonkey.co.uk/r/bigbrainsybordercollie)



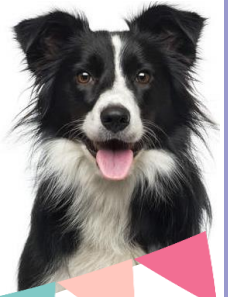
Please share this link with all of your Border Collie friends; we hope to make this the biggest ever study of Border Collie brain health and behaviour!



For any questions and to find out more about  
Part 2 of this study, contact  
Dr Rowena Packer [rpacker@rvc.ac.uk](mailto:rpacker@rvc.ac.uk)

# The Big Brainy Border Collie Study:

## Part 2: Brain Health and Behaviour in action



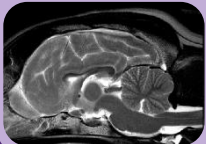
### Why are we doing this study?

- 🐾 **Epilepsy** is a complex brain disease that is often difficult to treat in **Border Collies**
- 🐾 We want to learn more about how Border Collie brains work to improve our knowledge and ability to treat **epilepsy and behavioural problems**

### What does your involvement include?

- 🐾 A 1-2 day visit to the Royal Veterinary College Queen Mother Hospital for Animals in Hertfordshire, involving:

#### MRI



#### EEG



#### Behaviour tests



#### Samples



#### Activity monitoring



Costs for the above tests will be covered as part of the study

### Who can help?

- 🐾 **EPILEPTIC BORDER COLLIES:** 1-8 years old; experienced 2+ seizures at least 24 hours apart, normal blood and urine tests, first seizure aged 6 months - 6 years
- 🐾 **NON-EPILEPTIC BORDER COLLIES:** 1-8 years old; with no diagnosed neurological or orthopaedic diseases

To register interest and find out more, please contact:  
**Dr Rowena Packer**  
rpacker@rvc.ac.uk

